

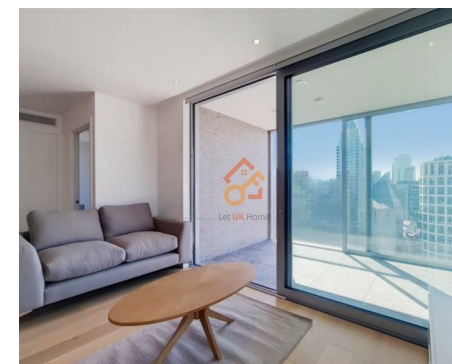
Let **UK** Home

2 Bedrooms

Flat

Located in London

£3,900 Per Month



info@letukhome.co.uk

<https://www.letukhome.co.uk/>

01795 358 886



1 Jasper Walk London

N1 7TW



Let UK Home are excited to offer this stunning two-bedroom apartment in Makers Building, part of The Makers development.

This property comprises a large bright open plan kitchen and living room leading to a large private balcony with great views, two double bedrooms (master with en-suite), a large family sized bathroom and ample storage.

The development is situated away from the bustling main street, quiet and pleasant, making it suitable for living. The luxurious and grand double-height entrance lobby offers concierge services as well as secure mail and delivery services. The development's communal areas include a lounge, and the apartments feature a cinema and live sports screening room, a fully equipped gym, and treatment rooms. The 160-square-meter outdoor space spans two communal rooftop terraces, perfect for summer gatherings and outdoor dining.

The development is within walking distance to Old Street Station (Northern Line). Through this station, you can reach the London financial center at Bank and Liverpool Street, and it is also very close to King's Cross St Pancras Station, Oxford Street stations, Canary Wharf Station, and other locations. The Elizabeth Line will pass through Liverpool Street Station, providing direct access to Canary Wharf, Oxford Street, London Heathrow Airport, and more.

The area surrounding the development has numerous universities. From the development, you can easily reach several renowned institutions: London Business School (LBS), University College London (UCL), London School of Economics and

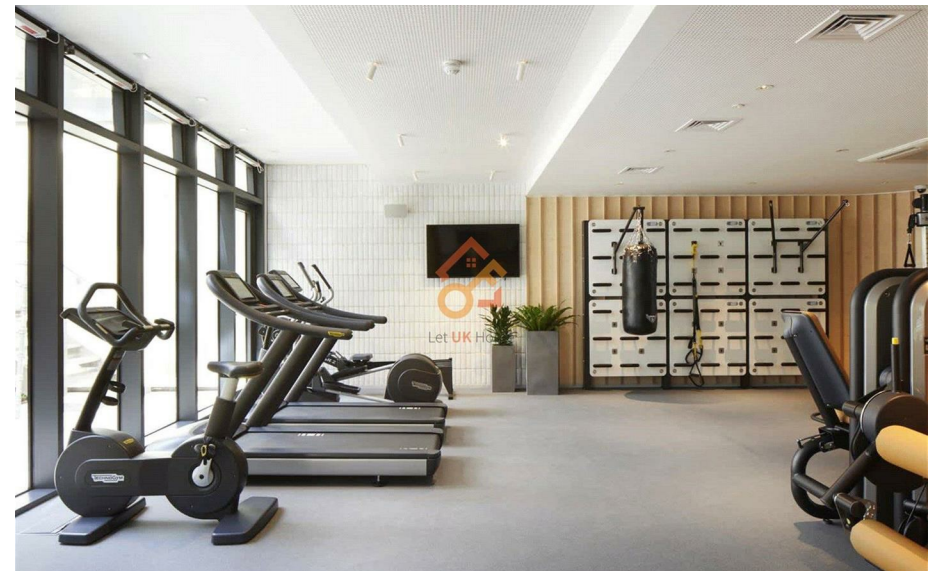
1 Jasper Walk London

£3,900 Per Month

- 20th Floor
- 24h Security
- The Gym
- Treatment Room
- EPC Rating: B



- Concierge Service
- Residents Lounge
- Cinema & Game Room
- Rooftop Terrace





Let **UK** Home

3F 2 Eastbourne Terrace
Paddington
London
W2 6LG

01795 358 886

info@letukhome.co.uk

Council Tax Band: F

Local Authority:

Agents Note: Whilst every care has been taken to prepare these particulars, they are for guidance purposes only. All measurements are approximate and are for general guidance purposes only and whilst every care has been taken to ensure their accuracy, they should not be relied upon and potential buyers/tenants are advised to recheck the measurements.

Energy Efficiency Rating		Current	Potential
Very energy efficient - lower running costs			
(92 plus) A			
(81-91) B		87	87
(69-80) C			
(55-68) D			
(39-54) E			
(21-38) F			
(1-20) G			
Not energy efficient - higher running costs			
England & Wales	EU Directive 2002/91/EC		

<https://www.letukhome.co.uk/>